



安裝靈活，可變色溫

馨程燈帶

出色的光效，安裝靈活

优点

- 更節能，更多選擇，更智能

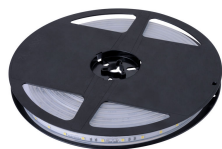
特点

- 系統效率最高提升至 105 lm/W，3 種流明輸出，4 種色溫，可調色溫控制 1000~4000K

应用

- 飯店
- 購物中心
- 餐廳
- 醫院
- 超市

Versions



聲程燈帶

配件



Ordercode 911401760352,
911401760362, 911401760382,
911401760392



Ordercode 911401760372,
911401760402



Ordercode 911401760412



Ordercode 911401760422



Ordercode 911401760452,
911401760462



Ordercode 911401760472,
911401760482, 911401760492

適用條件

環境溫度範圍 -20 to +35 °C

運作和電氣

輸入電壓 24 DC V

基本資訊

光源光束角度 120 °

CE 標誌 -

保護等級 IEC CLIII (III)

光學護蓋/鏡頭類型 MLO-PC

內附驅動器 否

ENEC 標誌 -

易燃性標誌 NO

灼熱絲測試 NO

光源可更換 否

裝置部件數量 -

光學裝置類型 S

初始性能

光通量容限 +/-10%

適用條件

| Order Code | Full Product Name | 最高調光等級 |
|--------------|-----------------------------|----------------|
| 911401759402 | LS170S LED4 827 IP20 L5000 | Not applicable |
| 911401759412 | LS170S LED4 840 IP20 L5000 | Not applicable |
| 911401759422 | LS170S LED4 865 IP20 L5000 | Not applicable |
| 911401759442 | LS170S LED8 827 IP20 L5000 | Not applicable |
| 911401759452 | LS170S LED8 840 IP20 L5000 | Not applicable |
| 911401759462 | LS170S LED8 865 IP20 L5000 | Not applicable |
| 911401759482 | LS170S LED12 827 IP20 L5000 | Not applicable |
| 911401759492 | LS170S LED12 840 IP20 L5000 | Not applicable |
| 911401759502 | LS170S LED12 865 IP20 L5000 | Not applicable |
| 911401759522 | LS170S LED16 827 IP20 L5000 | Not applicable |
| 911401759532 | LS170S LED16 840 IP20 L5000 | Not applicable |
| 911401759542 | LS170S LED16 865 IP20 L5000 | Not applicable |
| 911401759712 | LS170S LED4 927 IP20 L5000 | Not applicable |
| 911401759722 | LS170S LED8 927 IP20 L5000 | Not applicable |
| 911401759732 | LS170S LED12 927 IP20 L5000 | Not applicable |
| 911401759602 | LS170S LED8 827 IP44 L5000 | Not applicable |
| 911401759612 | LS170S LED8 840 IP44 L5000 | Not applicable |
| 911401759642 | LS170S LED12 827 IP44 L5000 | Not applicable |
| 911401759802 | LS170S LED10 TNW IP44 L5000 | 5% (1 to 10 V) |

應用

| Order Code | Full Product Name | 機械衝擊保護規範 | 防水防塵規範 (IP) |
|--------------|-----------------------------|----------|-------------|
| 911401759402 | LS170S LED4 827 IP20 L5000 | IK00 | IP20 |
| 911401759412 | LS170S LED4 840 IP20 L5000 | IK00 | IP20 |
| 911401759422 | LS170S LED4 865 IP20 L5000 | IK00 | IP20 |
| 911401759442 | LS170S LED8 827 IP20 L5000 | IK00 | IP20 |
| 911401759452 | LS170S LED8 840 IP20 L5000 | IK00 | IP20 |
| 911401759462 | LS170S LED8 865 IP20 L5000 | IK00 | IP20 |
| 911401759482 | LS170S LED12 827 IP20 L5000 | IK00 | IP20 |
| 911401759492 | LS170S LED12 840 IP20 L5000 | IK00 | IP20 |
| 911401759502 | LS170S LED12 865 IP20 L5000 | IK00 | IP20 |
| 911401759522 | LS170S LED16 827 IP20 L5000 | IK00 | IP20 |

| Order Code | Full Product Name | 機械衝擊保護規範 | 防水防塵規範 (IP) |
|--------------|-----------------------------|----------|-------------|
| 911401759532 | LS170S LED16 840 IP20 L5000 | IK00 | IP20 |
| 911401759542 | LS170S LED16 865 IP20 L5000 | IK00 | IP20 |
| 911401759712 | LS170S LED4 927 IP20 L5000 | IK00 | IP20 |
| 911401759722 | LS170S LED8 927 IP20 L5000 | IK00 | IP20 |
| 911401759732 | LS170S LED12 927 IP20 L5000 | IK00 | IP20 |
| 911401759602 | LS170S LED8 827 IP44 L5000 | IK03 | IP44 |
| 911401759612 | LS170S LED8 840 IP44 L5000 | IK03 | IP44 |
| 911401759642 | LS170S LED12 827 IP44 L5000 | IK03 | IP44 |
| 911401759802 | LS170S LED10 TNW IP44 L5000 | IK03 | IP44 |

控制調光

| Order Code | Full Product Name | 可調光 |
|--------------|-----------------------------|-----|
| 911401759402 | LS170S LED4 827 IP20 L5000 | 否 |
| 911401759412 | LS170S LED4 840 IP20 L5000 | 否 |
| 911401759422 | LS170S LED4 865 IP20 L5000 | 否 |
| 911401759442 | LS170S LED8 827 IP20 L5000 | 否 |
| 911401759452 | LS170S LED8 840 IP20 L5000 | 否 |
| 911401759462 | LS170S LED8 865 IP20 L5000 | 否 |
| 911401759482 | LS170S LED12 827 IP20 L5000 | 否 |
| 911401759492 | LS170S LED12 840 IP20 L5000 | 否 |
| 911401759502 | LS170S LED12 865 IP20 L5000 | 否 |
| 911401759522 | LS170S LED16 827 IP20 L5000 | 否 |

| Order Code | Full Product Name | 可調光 |
|--------------|-----------------------------|-----|
| 911401759532 | LS170S LED16 840 IP20 L5000 | 否 |
| 911401759542 | LS170S LED16 865 IP20 L5000 | 否 |
| 911401759712 | LS170S LED4 927 IP20 L5000 | 否 |
| 911401759722 | LS170S LED8 927 IP20 L5000 | 否 |
| 911401759732 | LS170S LED12 927 IP20 L5000 | 否 |
| 911401759602 | LS170S LED8 827 IP44 L5000 | 否 |
| 911401759612 | LS170S LED8 840 IP44 L5000 | 否 |
| 911401759642 | LS170S LED12 827 IP44 L5000 | 否 |
| 911401759802 | LS170S LED10 TNW IP44 L5000 | 是 |

初始性能 (1/2)

| Order Code | Full Product Name | 初始色度 | 初始相關色溫 | 初始 | |
|--------------|-----------------------------|-----------------------|--------|------|-------------|
| | | | | 顯色指數 | 初始 LED 燈具效率 |
| 911401759402 | LS170S LED4 827 IP20 L5000 | 0.463;0.42; SDCM 3 | 2700 K | 80 | 100 lm/W |
| 911401759412 | LS170S LED4 840 IP20 L5000 | 0.38;0.38; SDCM 3 | 4000 K | 80 | 110 lm/W |
| 911401759422 | LS170S LED4 865 IP20 L5000 | 0.3102;0.3329; SDCM 4 | 6500 K | 80 | 105 lm/W |
| 911401759442 | LS170S LED8 827 IP20 L5000 | 0.463;0.42; SDCM 3 | 2700 K | 80 | 90 lm/W |
| 911401759452 | LS170S LED8 840 IP20 L5000 | 0.38;0.38; SDCM 3 | 4000 K | 80 | 105 lm/W |
| 911401759462 | LS170S LED8 865 IP20 L5000 | 0.3102;0.3329; SDCM 4 | 6500 K | 80 | 105 lm/W |
| 911401759482 | LS170S LED12 827 IP20 L5000 | 0.463;0.42; SDCM 3 | 2700 K | 80 | 90 lm/W |
| 911401759492 | LS170S LED12 840 IP20 L5000 | 0.38;0.38; SDCM 3 | 4000 K | 80 | 100 lm/W |
| 911401759502 | LS170S LED12 865 IP20 L5000 | 0.3102;0.3329; SDCM 4 | 6500 K | 80 | 100 lm/W |
| 911401759522 | LS170S LED16 827 IP20 L5000 | 0.463;0.42; SDCM 3 | 2700 K | 80 | 90 lm/W |

| Order Code | Full Product Name | 初始色度 | 初始相關色溫 | 初始 | |
|--------------|-----------------------------|-----------------------|--------|------|-------------|
| | | | | 顯色指數 | 初始 LED 燈具效率 |
| 911401759532 | LS170S LED16 840 IP20 L5000 | 0.38;0.38; SDCM 3 | 4000 K | 80 | 100 lm/W |
| 911401759542 | LS170S LED16 865 IP20 L5000 | 0.3102;0.3329; SDCM 4 | 6500 K | 80 | 100 lm/W |
| 911401759712 | LS170S LED4 927 IP20 L5000 | 0.463;0.42; SDCM 3 | 2700 K | 90 | 85 lm/W |
| 911401759722 | LS170S LED8 927 IP20 L5000 | 0.463;0.42; SDCM 3 | 2700 K | 90 | 80 lm/W |
| 911401759732 | LS170S LED12 927 IP20 L5000 | 0.463;0.42; SDCM 3 | 2700 K | 90 | 80 lm/W |
| 911401759602 | LS170S LED8 827 IP44 L5000 | 0.4659; 0.421; SDCM 3 | 2700 K | 80 | 90 lm/W |
| 911401759612 | LS170S LED8 840 IP44 L5000 | 0.3825; 0.382; SDCM 3 | 4000 K | 80 | 100 lm/W |
| 911401759642 | LS170S LED12 827 IP44 L5000 | 0.4659; 0.421; SDCM 3 | 2700 K | 80 | 85 lm/W |
| 911401759802 | LS170S LED10 TNW IP44 L5000 | - | - | 80 | - |

初始性能 (2/2)

擊程燈帶

| Order Code | Full Product Name | 初始光通量 | 初始輸入功率 |
|--------------|-----------------------------|---------|--------|
| 911401759402 | LS170S LED4 827 IP20 L5000 | 400 lm | 19 W |
| 911401759412 | LS170S LED4 840 IP20 L5000 | 400 lm | 18 W |
| 911401759422 | LS170S LED4 865 IP20 L5000 | 400 lm | 18 W |
| 911401759442 | LS170S LED8 827 IP20 L5000 | 800 lm | 39 W |
| 911401759452 | LS170S LED8 840 IP20 L5000 | 800 lm | 37 W |
| 911401759462 | LS170S LED8 865 IP20 L5000 | 800 lm | 37 W |
| 911401759482 | LS170S LED12 827 IP20 L5000 | 1200 lm | 57 W |
| 911401759492 | LS170S LED12 840 IP20 L5000 | 1200 lm | 53 W |
| 911401759502 | LS170S LED12 865 IP20 L5000 | 1200 lm | 53 W |
| 911401759522 | LS170S LED16 827 IP20 L5000 | 1600 lm | 78 W |

| Order Code | Full Product Name | 初始光通量 | 初始輸入功率 |
|--------------|-----------------------------|---------|--------|
| 911401759532 | LS170S LED16 840 IP20 L5000 | 1600 lm | 72 W |
| 911401759542 | LS170S LED16 865 IP20 L5000 | 1600 lm | 72 W |
| 911401759712 | LS170S LED4 927 IP20 L5000 | 400 lm | 21 W |
| 911401759722 | LS170S LED8 927 IP20 L5000 | 800 lm | 41 W |
| 911401759732 | LS170S LED12 927 IP20 L5000 | 1200 lm | 61 W |
| 911401759602 | LS170S LED8 827 IP44 L5000 | 800 lm | 41 W |
| 911401759612 | LS170S LED8 840 IP44 L5000 | 800 lm | 37 W |
| 911401759642 | LS170S LED12 827 IP44 L5000 | 1200 lm | 59 W |
| 911401759802 | LS170S LED10 TNW IP44 L5000 | 1000 lm | 51 W |

機械和殼體

| Order Code | Full Product Name | 色彩 |
|--------------|-----------------------------|----|
| 911401759402 | LS170S LED4 827 IP20 L5000 | WH |
| 911401759412 | LS170S LED4 840 IP20 L5000 | WH |
| 911401759422 | LS170S LED4 865 IP20 L5000 | WH |
| 911401759442 | LS170S LED8 827 IP20 L5000 | WH |
| 911401759452 | LS170S LED8 840 IP20 L5000 | WH |
| 911401759462 | LS170S LED8 865 IP20 L5000 | WH |
| 911401759482 | LS170S LED12 827 IP20 L5000 | WH |
| 911401759492 | LS170S LED12 840 IP20 L5000 | WH |
| 911401759502 | LS170S LED12 865 IP20 L5000 | WH |
| 911401759522 | LS170S LED16 827 IP20 L5000 | WH |

| Order Code | Full Product Name | 色彩 |
|--------------|-----------------------------|----|
| 911401759532 | LS170S LED16 840 IP20 L5000 | WH |
| 911401759542 | LS170S LED16 865 IP20 L5000 | WH |
| 911401759712 | LS170S LED4 927 IP20 L5000 | WH |
| 911401759722 | LS170S LED8 927 IP20 L5000 | WH |
| 911401759732 | LS170S LED12 927 IP20 L5000 | WH |
| 911401759602 | LS170S LED8 827 IP44 L5000 | CL |
| 911401759612 | LS170S LED8 840 IP44 L5000 | CL |
| 911401759642 | LS170S LED12 827 IP44 L5000 | CL |
| 911401759802 | LS170S LED10 TNW IP44 L5000 | CL |

